

Your guide to the
perfect moment



Credit Pop Up Weddings Tasmania

Peppers Cradle Mountain Lodge
WEDDING KIT

PEPPERS
CRADLE MOUNTAIN LODGE
CRADLE MOUNTAIN



Peppers Cradle Mountain Lodge

Cradle Mountain, Tasmania

Pristine lakes, rugged mountain peaks and ancient towering forests create a striking backdrop for your wedding. The World Heritage listed Cradle Mountain in the Tasmanian highlands is one of the last wilderness regions on earth. On its doorstep is the rustic retreat of Peppers Cradle Mountain Lodge.

Your guests will love the breathtaking scenery, cosy cabins and magnificent meals, not to mention a superb choice of alpine activities and indulgences. Contemplate the majesty of the mountains on an adventure trek, followed by a blissful alpine body treatment in our award winning Waldheim Alpine Spa. In the evening, indulge in the warm glow of the open fire in the lodge as you reminisce with family and friends.

Peppers Cradle Mountain Lodge is the perfect setting for a wedding celebration of just two, or up to 80 guests. No matter the size of your celebration, you will be offered personalised service and attention to detail.

We look forward to sharing this special day with you.

Sincerest regards,

The team at Peppers Cradle Mountain Lodge



Wedding packages

Basic Elopement Package - \$1960*

- Your legal paperwork and local celebrant
- Hand tied bouquet and buttonhole (artificial flowers)
- Parks and wildlife permission and permit
- Professional photographer including 75 images on a USB (six photographers to choose from)
- Witnesses provided (if required)

Inclusive Elopement Package - \$5890*

- Two nights accommodation in a King Billy Suite, including breakfast daily*
- Your legal paperwork and local celebrant
- Hand tied bouquet and buttonhole (artificial flowers)
- Parks and wildlife permission permit
- Professional photographer including 100 images on a USB (six photographers to choose from)
- Bridal hair and make up (at your cabin)
- Wedding night dinner for two at Highland Restaurant
- Wedding cake for two people
- Couples massage and Private Sanctuary at Waldheim Spa
- Cheese platter and bottle of sparkling wine for two
- Witnesses provided (if required)

Tailored Wedding Package

For a tailored and more personalised wedding, please contact our Wedding Co-ordinator for options and pricing.



Getting married

Your celebrant

Once your wedding date is confirmed, Pop Up Weddings Tasmania will assist you with arranging your celebrant or clergy for your wedding ceremony. To meet legal requirements, they will provide you with the Notice of Intention to Marry paperwork.

Legal requirements

You will need to be able to comply with the following legal requirements for your Notice of Intention to Marry:

- You must be over 18 years of age
- Provide a valid birth certificate / valid passport / other ID as required
- If divorced – Decree Absolute
- If widowed – Death Certificate of your former spouse
- Legal proof if your name has been changed

Please note, originals of all documents including Notice of Intended Marriage are required by your celebrant prior to the ceremony.



Ceremony locations

Dove Lake

This iconic National Park location is a 20 minute drive from the lodge. Dove Lake allows for 40 guests in the car park and 15 guest in the Boat Shed.

Pencil Pine Falls

Stand beside the stunning Pencil Pine Falls. This short boardwalk is also wheelchair accessible. Allows for maximum of 15 guests.

Enchanted Walk / King Billy Track

Be surrounded by age old temperate rainforest and ancient King Billy Pines. Allows for a maximum of 20 guests.

Devils Bar

An intimate ceremony with the wood fire blazing and views leading into the National Park. Allows for a maximum of 25 guests.

Cradle Room

With views over the lodge pond, this room can be dressed as desired providing a private space for larger weddings. Allows for a maximum of 80 guests.

National Park Passes

Please be aware that all of your guests attending your wedding and travelling to Dove Lake for your ceremony will need a Parks Pass and to catch the shuttle service to and from Dove Lake. These shuttle buses run regularly and you should allow at least 40 minutes to get the shuttle from Peppers to Dove Lake. The bride and groom (along with your photographer and celebrant) are covered under the Wedding permit and permission and have an alternate access.

Wet Weather

Given the unpredictable climate, a backup wet weather ceremony venue is required. For ceremonies with up to 25 guests, the Devil's Room can be closed for a private and intimate ceremony. Alternatively, the Cradle Room can hold up to 80 guests providing an expansive view of

Image courtesy of Pop up Weddings Tasmania



Reception venues

At Peppers Cradle Mountain Lodge, we can tailor a reception to the size and style of your wedding. Offering a variety of indoor reception options from intimate tables for 2 to a grand reception. We will ensure that you leave this spectacular location with lifelong memories.

Cradle Room

Located on the top floor of the lodge, this private room boasts stunning views and can be themed to your wedding. It caters for up to 80 guests for a standing cocktail reception or 50 guests for a seated banquet reception. It is fully-equipped with a sound system and microphone facilities.

Hire cost: exclusive lunch (11:30am to 3:30pm) or evening use (5:30pm to 9:30pm) - \$800* (minimum 10 guests).

Wine Cellar

Dine amongst renowned wines in the private and intimate Wine Cellar. Enjoy a degustation menu with wines to match each course.

Hire cost: evening exclusive use - \$600* (minimum 6 and maximum 8 guests).

Devils Bar

With direct access to the Guest Bar, the Devils Bar is perfect for an informal, intimate reception for up to 25 guests (standing only).
Lunch (12pm to 4pm) or dinner (5pm to 9pm).

Hire cost: exclusive use lunch - \$600*, Dinner - \$800* (minimum 10 and maximum 25 guests).

Pencil Pine Room

A private lunch or dinner reception with just your closest friends and family. This room overlooks the entrance of the National Park.
Lunch (11:30am to 3:30pm) or dinner (5:30pm to 9:30pm)

Hire cost: exclusive use - \$400* (minimum 10 and maximum 20 guests).



Dining options

Alternate Drop Menu

- Two Course Alternate Drop Menu - from \$70* per person
- Three Course Alternate Drop Menu - from \$82* per person

Grazing Bar

Our grazing bars feature a selection of Tasmanian cheeses, charcuterie, olives, marinated and pickled vegetables, fresh local fruit, house-roasted nuts, smoked salmon, pate, terrine, crackers, breads and condiments.

\$45* per person (minimum 10 people)

Family Style Buffet

- Two hot options with two hot sides and two salads from \$65*
- Three Hot Options with 3 Sides and 2 Salads \$75

Set Menu

- Two Course Set Menu - from \$70* per person
- Three Course Set Menu - from \$82* per person

Tasting Menu

- Five Course Tasting Menu (no matching wines) - \$110* per person
- Five Course Tasting Menu with matching wines (60ml pour for wine match) - \$160* per person



Beverage options

Cradle Package - 3 hours

\$80* per person

All the wines in the Cradle Package are selected for their delicious flavour and are designed to be the perfect complement to your dining selection.

Sparkling - Devils Corner

White - Spring Vale Sauvignon Blanc

Red - Ninth Island Pinot Noir

Beer - Boags Selection; Draught, XXX Ale and Premium Light

Luxury Package - 3 hours

\$110* per person

The Luxury Package has a magnificent selection of quality Tasmanian wines for you and your guests to enjoy. These wines are perfect for those that enjoy the finer things in life.

Sparkling - Josef Chromy NV

White - Dalrymple Sauvignon Blanc
- Glenayr Chardonnay

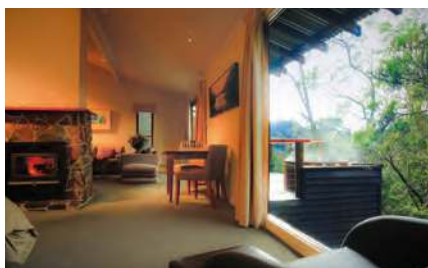
Red - Clemens Hill Pinot Noir

Beer - Boag's Premium and Premium Light
- Corona



Wedding accommodation

Accommodation rates are available on request. Please note, dates and number of persons required. For wedding groups a discount on the accommodation rate may apply. Please see below for recommended cabin types. For alternative cabin options or family cabins, please contact your Wedding Co-ordinator.



King Billy Suite

The ultimate in luxury, featuring separate sleeping and living areas, including double sided wood fire, king size bed and oversized bathroom with spa. These suites have beautiful outlooks over the surrounding wilderness, including a large picture window from the bedroom. Outside, a large deck area includes a private hot tub.



Spa Suite

Featuring a king sized bed with a soft goose-down duvet. Of course a log fire and a deep spa are also a big part of the attraction. Spa Suites have a private verandah with views looking onto the surrounding wilderness, making wildlife spotting all a part of the natural charm.



Contemporary Spa Cabin

The cabins are located in natural bushland settings and are private and peaceful. Verandahs offer views through the treetops or directly into the surrounding Myrtle forest. Featuring a modern interior with an efficient wood fire look gas heater to keep you warm and cozy through the night.



For your day

Flowers

Your wedding flowers are provided in consultation with the style/design that you like. All flowers used outdoors in the National Park are to be artificial. Additional flowers can be organised and any florals to be used indoors do not need to be artificial.

Hair and make-up

Qualified and experienced hair and make up artists are available for both yourself and your bridal party/guests. All of our hair and make up artists travel to you and work in your cabin for your comfort.

Wedding cake

We are able to provide a wedding cake for two or for 80! Traditional or modern, we can tailor your cake to your dietary requirements and flavour tastes. Cheese towers, cheesecakes, cupcakes, traditional fruit cakes, sponges and mud cakes – we also decorate and can include cake toppers if you prefer.

Reception styling

Sometimes the little things make all the difference and we have a wide range of styling items that are available for your reception. Table cloths are automatically included – but we can add chair covers, centrepieces, fairy lights and drapery. We love to work of images that you find inspiring and so the full set up and pack up including placing and sourcing your bonbonnières.

Photography and Videography

We work with the best photographers and videographers from around the state and have negotiated great rates for weddings at Cradle Mountain. You have a choice of available photographers and videographers and all of our packages include edited images delivered to you with a quick turnaround.

Additional

If you'd like live entertainment (DJ, acoustic performers), children's entertainment, a photo booth, airport collection/drop off or anything else, we can also source this for you. Please just let us know.



Waldheim Alpine Day Spa

The Waldheim Alpine Spa at Peppers Cradle Mountain Lodge reflects the natural purity and pristine beauty of the Tasmanian wilderness. Combining nature's intelligence and the power of touch, our spa and massage therapies mirror the balanced beauty of Cradle Mountain. You can add a professional spa therapy package to your booking pre or post wedding or why not book a couples treatment.

For a look at our full Spa Menu, visit cradlemountainlodge.com.au/waldheim_alpine_spa

Private Sanctuary

Waldheim Alpine Spa has a dedicated therapeutic area known as The Sanctuary. This includes a steam room, sauna, large hot tub and cool plunge pool as well as a relaxation lounge. The benefits of combining hot and cold water therapies is an invigorating experience that promotes healthy blood flow and enhances circulation. This remedy has ancient origins and is held in high esteem by modern day health professionals.

The Sanctuary is available for private use daily (bookings of two to four guests). A Decedent Private Sanctuary is also available and includes a bottle of Tasmanian sparkling wine and chocolate covered strawberries, which can be enjoyed as you sit in the outdoor hot tub (pictured above) or sauna and soak away the stresses of everyday life.

To avoid disappointment, we strongly recommend making advanced bookings prior to check in, as the spa is incredibly popular. The spa environment lends itself only to those 16 years of age and over and all prices and treatments are subject to change.

Private Bath Ritual

Relax in a beautiful, warm bath whilst soaking up the view of the stunning alpine landscape. Enriched with a skin nourishing milk bath of vitamins, oat extract and camellia oil, this deeply relaxing escape leaves the mind calm and the skin soft, supple and wedding ready.



While at Peppers Cradle Mountain Lodge

Lodge activities

Here at Peppers Cradle Mountain Lodge, we offer a varying activity schedule that you and your guests can join, alternatively we can offer private activities for your wedding party. Advance notice is required. These include guided walks or interpretive drive tours where you'll explore the park and experience breathtaking and iconic views, get out amongst button grass plains or cool temperate rainforest.

Our guide can take you spotlighting for nocturnal animals where you'll enjoy the wonders of the bush at night, all from the comfort of a vehicle and possibly spot wombats, possums, pademelons and wallabies. If you're really lucky a Tasmanian Devil. In summer, see Cradle Mountain from the unique perspective of a canoe.

Wine and cheese

This fun and tasty afternoon session will have you full to the brim with the best of Tasmanian cheese and wine products. Accompanied by a professional host, you will also leave with a little more knowledge, as the history of Tasmania's cheese and wine industries unfolds throughout the afternoon.

Horse riding

It doesn't matter if you're an advanced rider or a novice horseperson, these rides give you the chance to enjoy the spectacular mix of button grass plains and alpine forests and take in the view across the Speeler plains to Cradle Mountain. Group bookings are required in advance.

Helicopter flights

Departing by helicopter from Cradle Mountain Village, this 30 minute flight provides spectacular views over Fury Gorge – Australia's deepest Gorge, Cradle Mountain, Dove Lake, Crater Lake, Houndslow Heath, Barn Bluff, Mt Emmett, Lake Will, Waterfall Valley, the original Weindorfers Chalet and the Overland Track. Experience the breathtaking views of Tasmania's rare natural treasures and the stunning beauty of this ancient landscape. Minimum numbers apply. Flights are seasonal and subject to weather conditions.



Things to remember

Getting to Peppers Cradle Mountain Lodge

- Air connections: regular flights are available to Launceston with Jetstar, Virgin Australia and Qantas. Flights to Devonport are available with Qantas Link.
- Transfers: the lodge does not provide a transfer service, however, private transfers can be organised with VIP Transfers Tasmania on +61 0429 772 479 or info@viptransferstas.com.au
- Self drive: car rental is available through all major car rental companies in airport and city locations. A downloadable fact sheet can be found on our website cradlemountainlodge.com.au/getting_there.html

National Park entry

Please be aware that all of your guests if attending your wedding and travelling to Dove Lake for your ceremony – will need a Parks Pass and to catch the shuttle service to and from Dove Lake.

These shuttle buses run regularly and you should allow at least 40 minutes to get the shuttle from Peppers to Dove Lake. The bride and groom (along with your photographer and celebrant) are covered under the wedding permit and permission and have an alternate access so they don't get stuck behind the boom gate.

Styling of your ceremony location is not permitted in the National Park – and chairs for elderly are kept to a minimum where possible. No area is able to be 'closed' to the public –so please bear this in mind when choosing Dove Lake as it is a very busy and popular location.

Wedding permits

The Cradle Mountain - Lake St. Clair National Park requires all proposed ceremonies within the park to have received prior approval. Your Wedding Co-ordinator will assist you with this application process and can provide assistance when selecting a ceremony location.

Weather at Cradle Mountain

The weather in this alpine region is changeable, unpredictable and enjoyable when well prepared. Average maximum temperature is 18° degrees celsius (64° degrees fahrenheit) in summer and 6° degrees celsius (43° degrees fahrenheit) in winter.



Preferred suppliers

Pop Up Weddings

Pop Up Weddings is our preferred wedding supplier.

Phone: 0425 766 725

Email: marryus@popupweddingstasmania.com.au

Web: popupweddingstasmania.com.au

Initial enquiry

We will require the following information:

- Full name and contact details of bride and groom
- Wedding date and preferred reception time and venue
- Estimated number of guests/attendees
- All terms and conditions are as per your wedding contact with Pop Up Weddings
- Rates are subject to change depending on government taxes and /or policies
- Rates are quoted in Australian dollars (AUD) and Goods and Services Tax (GST), currently 10%, is included

The logo features a dense, repeating pattern of stylized, swirling leaf-like shapes in a light grey color, filling the left half of the page.

Peppers Cradle Mountain Lodge

4038 Cradle Mountain Rd
Cradle Mountain TAS 7306

Phone: (03) 6492 2100 (within Australia)
+61 3 6492 2100 (International)

cradlemountain.grp@peppers.com.au
cradlemountainlodge.com.au



PeppersHotels

PEPPERS

CRADLE MOUNTAIN LODGE
CRADLE MOUNTAIN